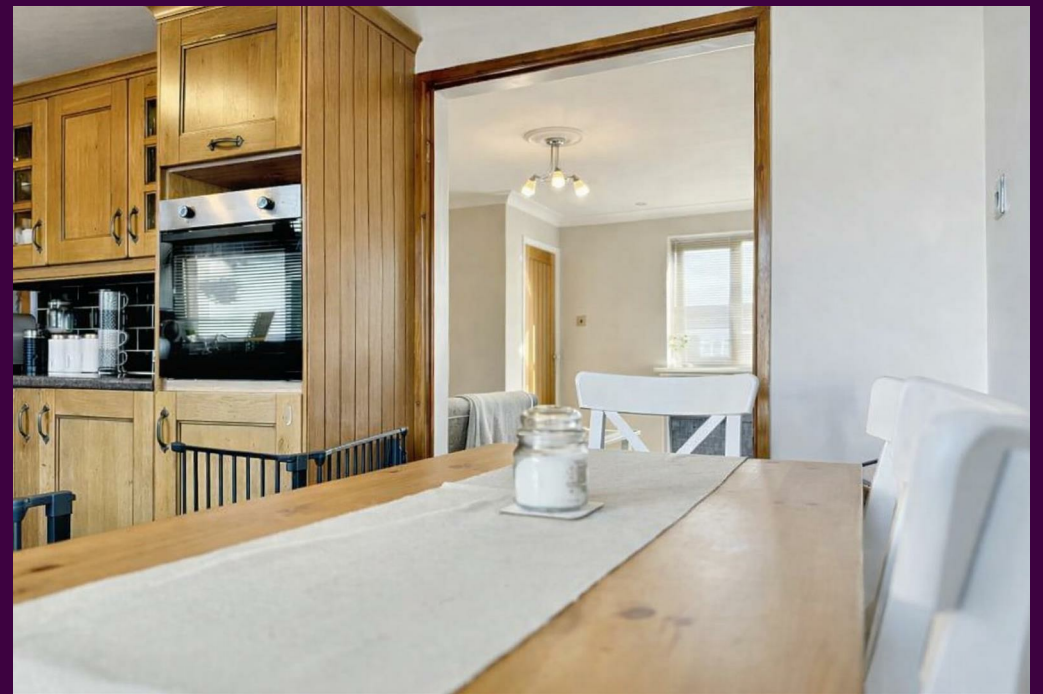


Wolsingham Drive, Thornaby



Offers Over £160,000

IH INGLEBY HOMES

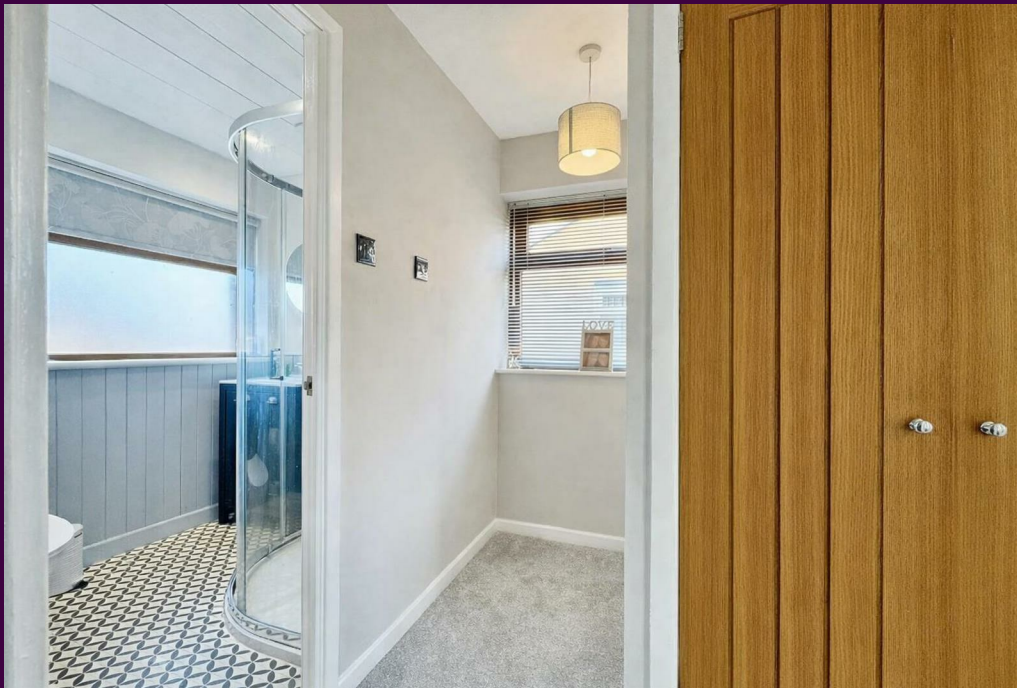




This handsome, three bedroom semi-detached property has seen much improvement, and certainly merits early inspection, call Ingleby Homes on 01642 671025 to arrange your viewing.

Pleasantly positioned within this favoured Thornaby location, with a rear garage, drive and lovely enclosed westerly facing garden with re-laid near and far end patios, lawn and raised planters, gated rear access.

Close to 'highly regarded' schooling and fantastic amenities, this is a property that may prove especially popular with younger families, or those looking to 'put down roots'.



Briefly, the accommodation comprises an entrance hall, lounge with feature fireplace, pen-plan kitchen/diner, three first floor bedrooms and modern refitted shower room.



- Attractive three-bedroom semi-detached property
- Favoured Thornaby location
- Much improved and tasteful throughout
- Lovely enclosed rear garden, rear drive and garage
- Close to schooling and fantastic amenities
- Early viewing advised